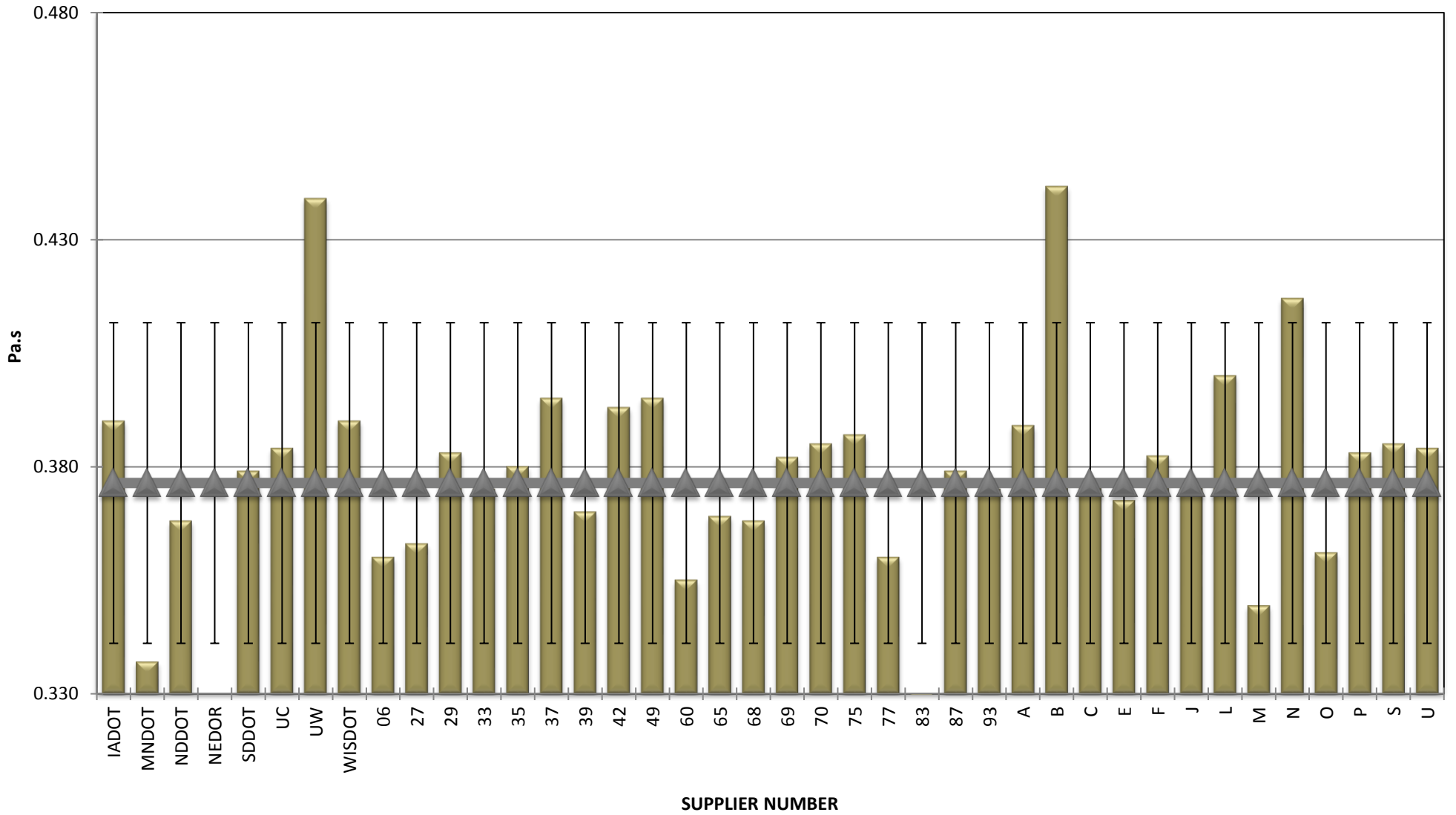


COMBINED STATE BINDER GROUP ROUND ROBIN SUMMARY B 2017-2
PG 64-22

	Rot. Visc.	ODSR	RTFO DSR	PAVDSR	Mass Loss	S-value	m-value	Jnr @ 100 Pa %	Rec. 100 Pa	Jnr @ 3200 Pa %	Rec. @ 3200 Pa
A											
19	0.388	1.13	3.14	3,284	0.284	159	0.359	1.190	7.90	1.289	3.50
51	0.390	1.16	3.05	3,385	0.290	160	0.363	1.242	6.40	1.324	3.30
97	0.388	1.18	3.15	2,990	0.314	151	0.367	1.188	7.80	1.286	3.40
98	0.390	1.18	3.12	3,159	0.274	160	0.370	1.205	7.20	1.297	3.30
AVERAGE	0.389	1.16	3.11	3,205	0.291	158	0.365	1.206	7.33	1.299	3.38
B											
01	0.485	1.10	2.79	3,030	0.259	164	0.350	1.300	6.90	1.400	2.90
17	0.420	1.10	3.17	3,060	0.266	166	0.345	1.200	7.40	1.300	3.30
45	0.420	1.08	2.75	3,730	0.281	168	0.340	1.200	8.80	1.400	3.10
AVERAGE	0.442	1.09	2.90	3,273	0.269	166	0.345	1.233	7.70	1.367	3.10
C											
28	0.379	1.17	2.86	2,779	0.185	182	0.344	1.393	4.58	1.476	2.88
66	0.375	1.17	2.81	2,678	0.210	177	0.348	1.380	3.98	1.454	2.76
90	0.375	1.15	2.99	2,873	0.261	172	0.339	1.284	7.64	1.403	2.95
99	0.375	1.18	2.82	2,572	0.280	202	0.341	1.328	7.08	1.451	2.81
AVERAGE	0.376	1.17	2.87	2,726	0.234	183.25	0.343	1.346	5.82	1.446	2.85
E											
15	0.374	1.15	2.98	3,040	0.292	163	0.350	1.261	5.77	1.349	2.73
89	0.371	1.17	3.06	2,670	0.313	166	0.363	1.227	6.03	1.315	2.77
AVERAGE	0.373	1.16	3.02	2,855	0.303	165	0.357	1.244	5.90	1.332	2.75
F											
02	0.392	1.20	2.61	2,946	0.243	155	0.378	1.263	5.54	1.350	2.83
11	0.394	1.19	3.09	3,345	0.181	162	0.350	1.228	6.08	1.317	3.31
34	0.378	1.20	2.97	3,650	0.292	172	0.360	1.270	6.41	1.360	3.01
48	0.374	1.20	3.10	3,090	0.316	171	0.354	1.240	6.72	1.340	3.11
56	0.383	1.10	2.96	3,310	0.319	171	0.356	1.278	6.26	1.381	2.53
62	0.373	1.12	3.02	3,450	0.301	176	0.358	1.238	6.65	1.340	2.83
AVERAGE	0.382	1.17	2.96	3,299	0.275	167.833	0.359	1.253	6.28	1.348	2.94
J											
05	0.369	1.09	2.98	3,723	0.233	141	0.352	1.025	7.65	1.101	4.14
08	0.369	1.11	2.99	3,405	0.224	152	0.355	1.082	7.79	1.164	4.13
10	0.383	1.15	2.89	3,301	0.304	164	0.351	1.255	5.70	1.382	2.48
22	0.385	1.14	2.98	3,505	0.331	170	0.354	1.201	6.18	1.333	2.41
31	0.368	1.11	2.70	3,520	0.222	155	0.352	1.063	8.30	1.063	4.11
41	0.368	1.06	3.03	3,480	0.239	159	0.355	0.981	6.98	1.042	4.40
44	0.386	1.16	2.90	3,246	0.306	163	0.358	1.236	5.97	1.368	2.16
52	0.385	1.14	3.01	3,029	0.317	159	0.358	1.204	6.15	1.335	2.43
AVERAGE	0.377	1.12	2.94	3,401	0.272	157.875	0.354	1.131	6.84	1.224	3.28
L											
25	0.400	1.18	3.47	3,861	0.368	163	0.356	1.140	7.44	1.229	3.74
59		1.20	2.97	3,450	0.271	172	0.355	1.220	8.18	1.340	3.25
AVERAGE	0.400	1.19	3.22	3,656	0.320	167.5	0.356	1.180	7.81	1.285	3.50
M											
04	0.360	1.13	2.41	2,830	0.129	159	0.368				
47	0.315	1.11	2.61	2,683	0.225	156	0.361				
57	0.373	1.11	2.68	2,703	0.193	156	0.366	1.535	5.80	1.597	2.90
AVERAGE	0.349	1.12	2.57	2,739	0.182	157	0.365	1.535	5.80	1.597	2.90
N											
43	0.416	1.20	2.80	3,470	0.246	162	0.361	1.340	5.42	1.440	2.23
95	0.418	1.22	2.86	3,220	0.243	161	0.356	1.280	5.96	1.370	2.40
AVERAGE	0.417	1.21	2.83	3,345	0.245	161.5	0.359	1.310	5.69	1.405	2.32
O											
76	0.362	1.16	2.80	4,160	0.243	165	0.356	1.371	5.24	1.466	2.32
85	0.360	1.15	2.71	3,620	0.27	172	0.351	1.425	4.71	1.519	2.11
AVERAGE	0.361	1.16	2.76	3,890	0.257	169	0.354	1.398	4.98	1.493	2.21
P											
30	0.380	1.17	3.16	3,521	0.380	177	0.353	1.175	6.60	1.267	2.80
73	0.386	1.13	3.03	3,200	0.356	146	0.356	1.227	6.44	1.322	2.86
AVERAGE	0.383	1.15	3.10	3,361	0.368	162	0.355	1.201	6.52	1.295	2.83
S											
53	0.381	1.14	2.80	3,400	0.303	156	0.355	1.350	5.49	1.450	2.28
64	0.389	1.14	2.81	3,140	0.292	170	0.355	2.590	5.18	1.440	2.29
AVERAGE	0.385	1.14	2.81	3,270	0.298	163	0.355	1.970	5.34	1.445	2.29
U											
13	0.390	1.17	3.04	2,990	0.342	155	0.361	1.163	7.51	1.275	3.04
24	0.378	1.10	3.09	3,440	0.303	160	0.387	1.224	7.69	1.347	3.00
AVERAGE	0.384	1.14	3.07	3,215	0.323	158	0.374	1.194	7.60	1.311	3.02
V											
58	0.382	1.12	2.63	3,540	0.295	172	0.359	1.418	5.42	1.535	1.99
78	0.380	1.11	3.01	3,580	0.316	172	0.357	1.255	6.34	1.370	1.41
81	0.382	1.11	2.71	3,420	0.304	174	0.360	1.444	5.47	1.561	1.99
AVERAGE	0.381	1.11	2.78	3,513	0.305	173	0.359	1.372	5.74	1.489	1.80

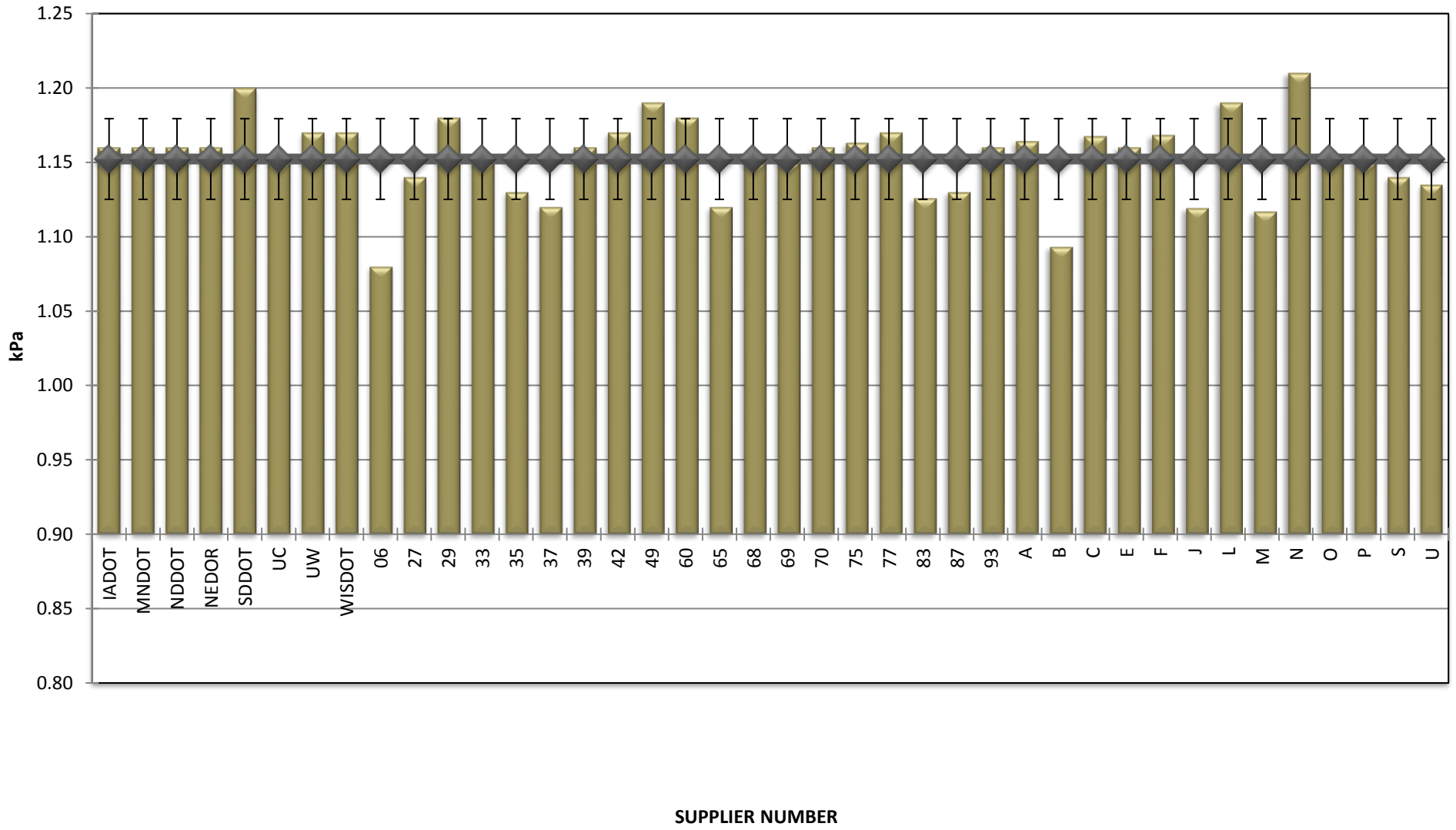
**COMBINED STATE BINDER GROUP ROUND ROBIN
SUMMARY B 2017-2
PG 64-22**

ROTATIONAL VISCOSITY



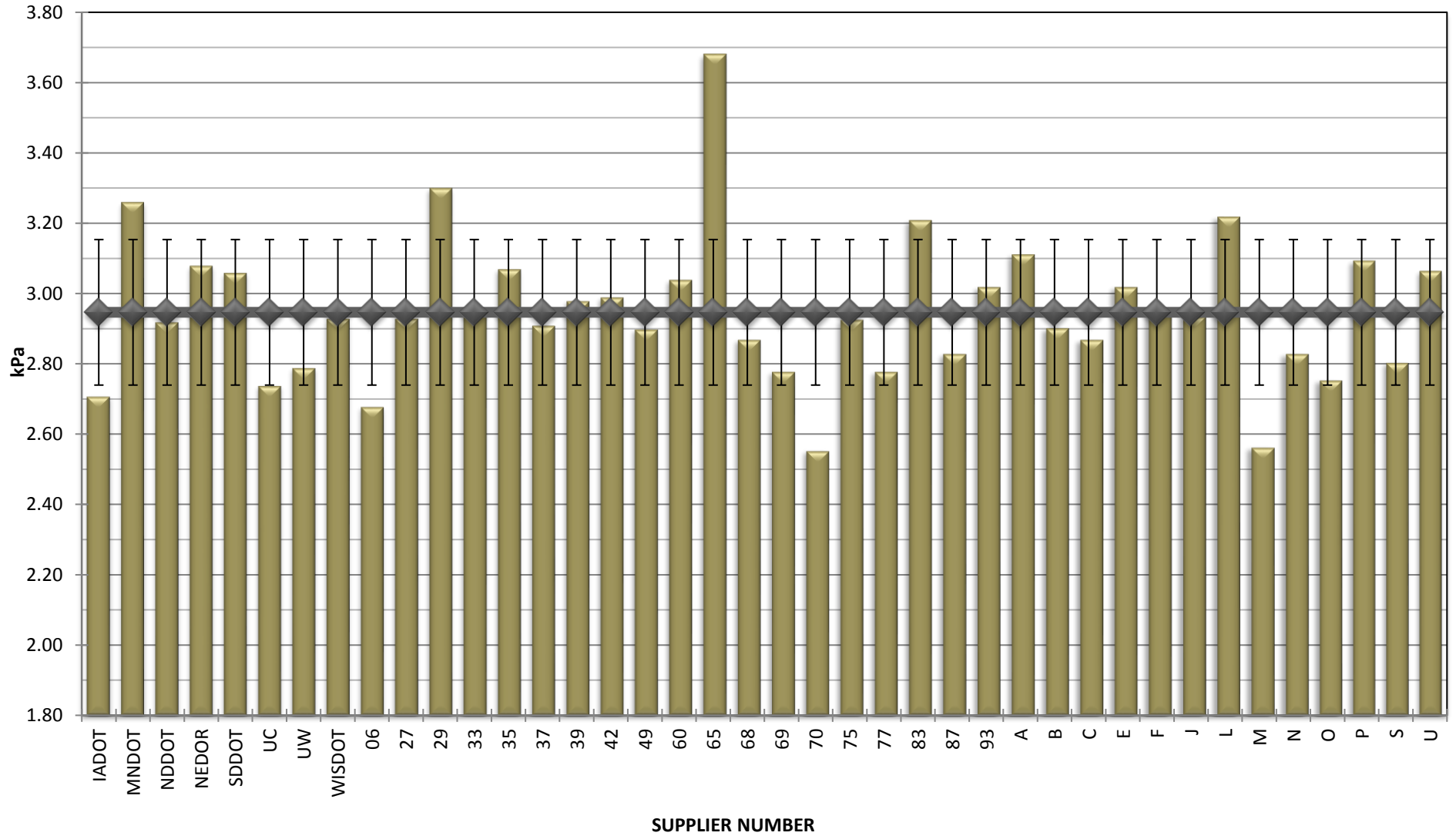
**COMBINED STATE BINDER GROUP ROUND ROBIN
SUMMARY B 2017-2
PG 64-22**

DSR - ORIGINAL



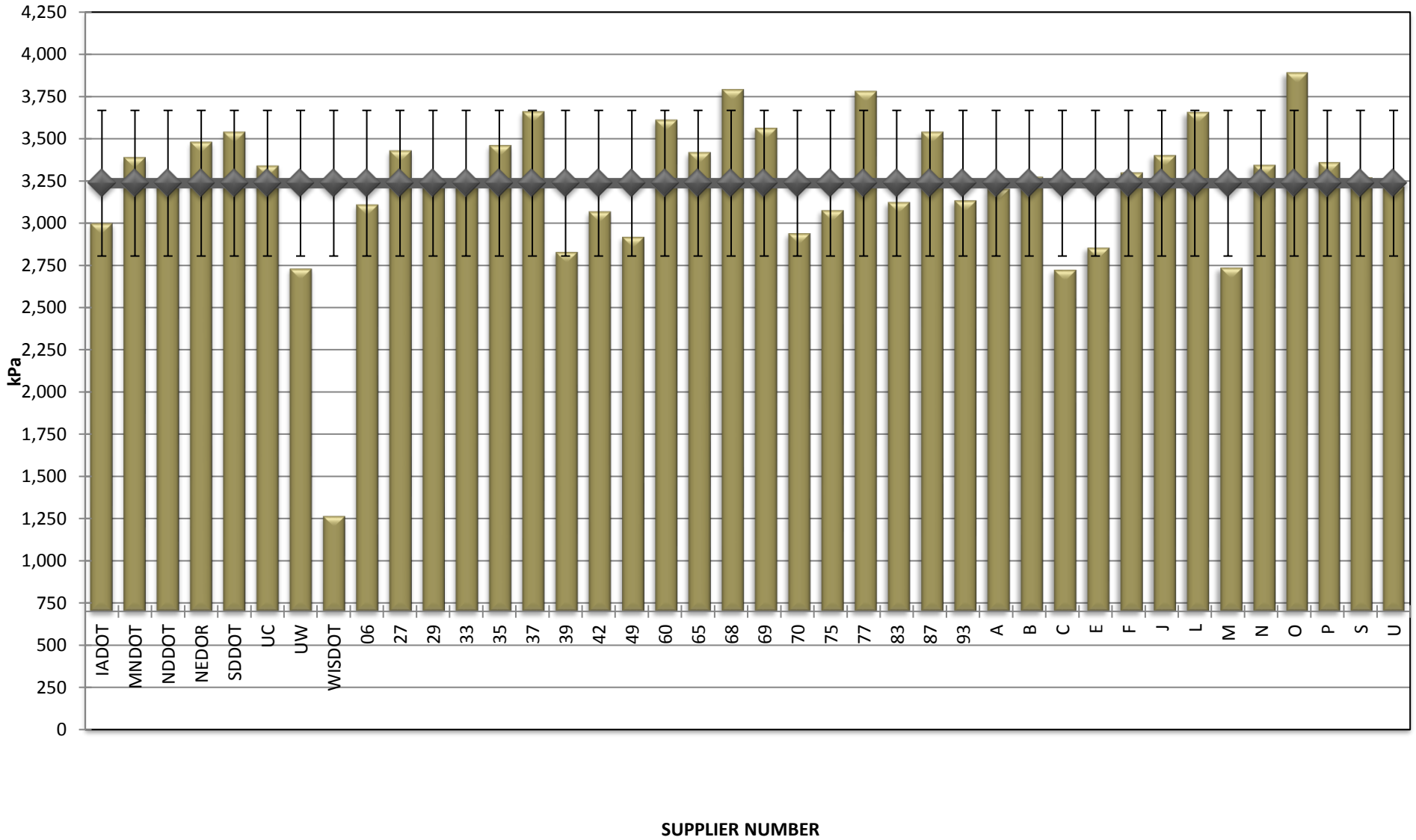
**COMBINED STATE BINDER GROUP ROUND ROBIN
SUMMARY B 2017-2
PG 64-22**

DSR - RTFO



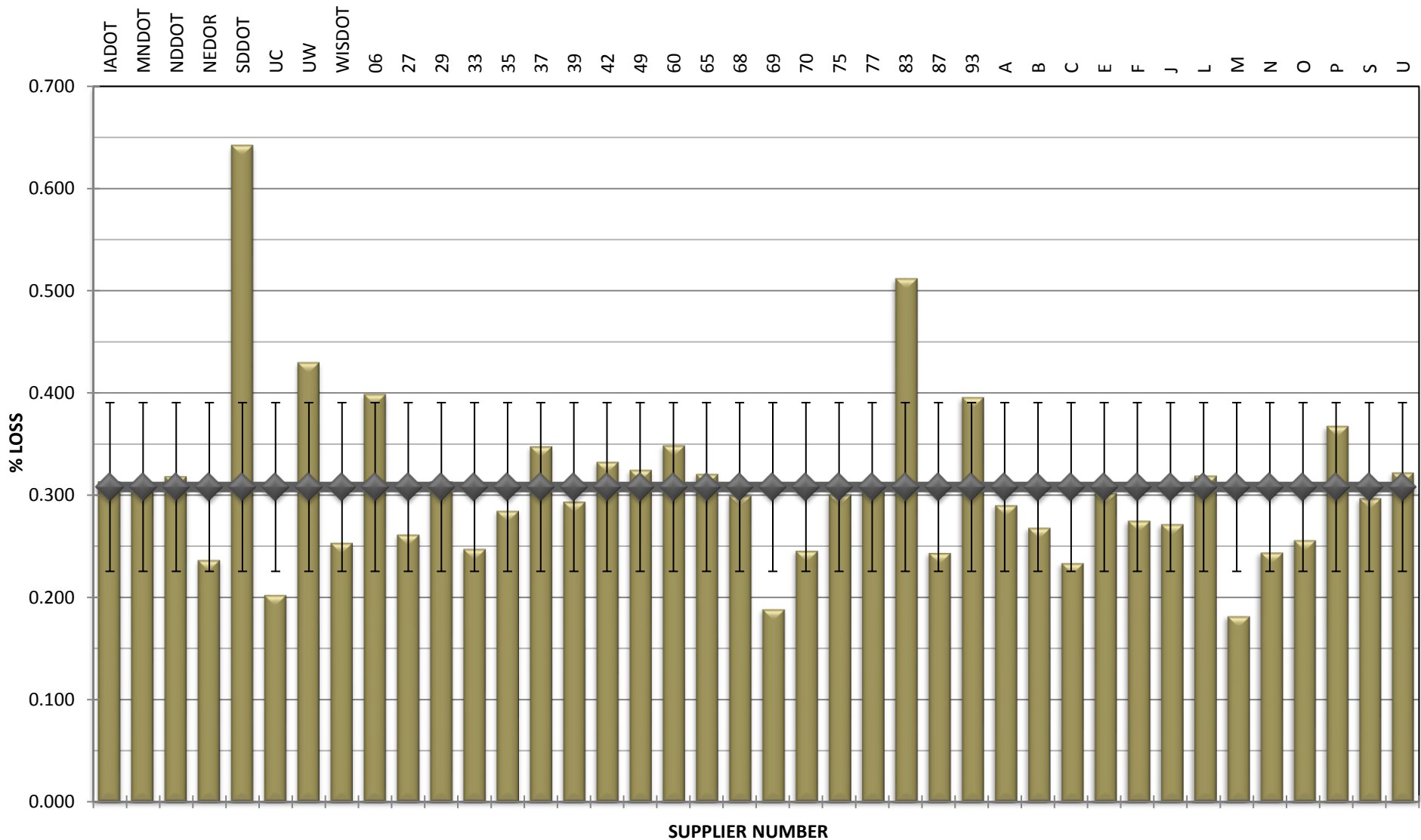
**COMBINED STATE BINDER GROUP ROUND ROBIN
SUMMARY B 2017-2
PG 64-22**

DSR - PAV



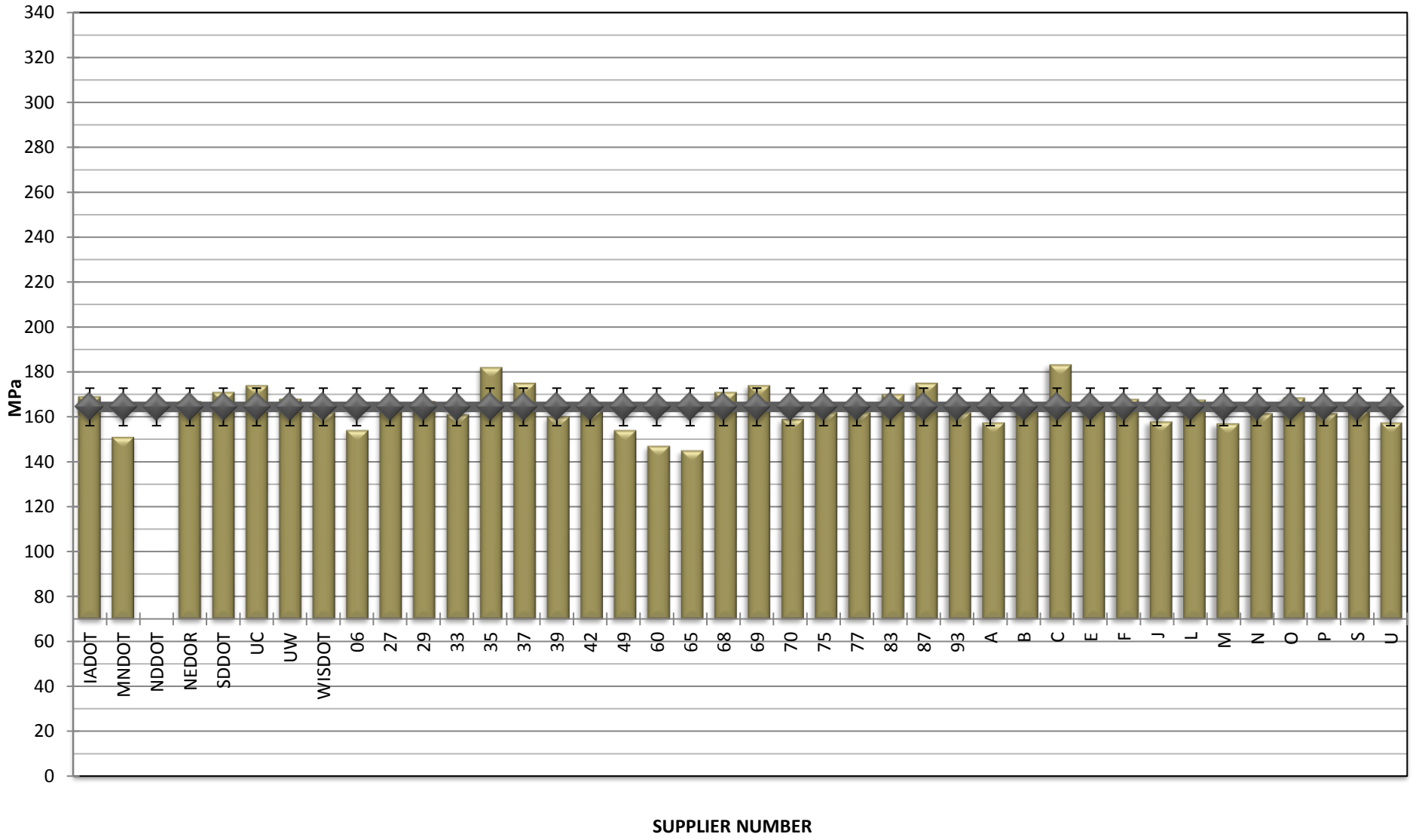
**COMBINED STATE BINDER GROUP ROUND ROBIN
SUMMARY B 2017-2
PG 64-22**

RTFO MASS LOSS



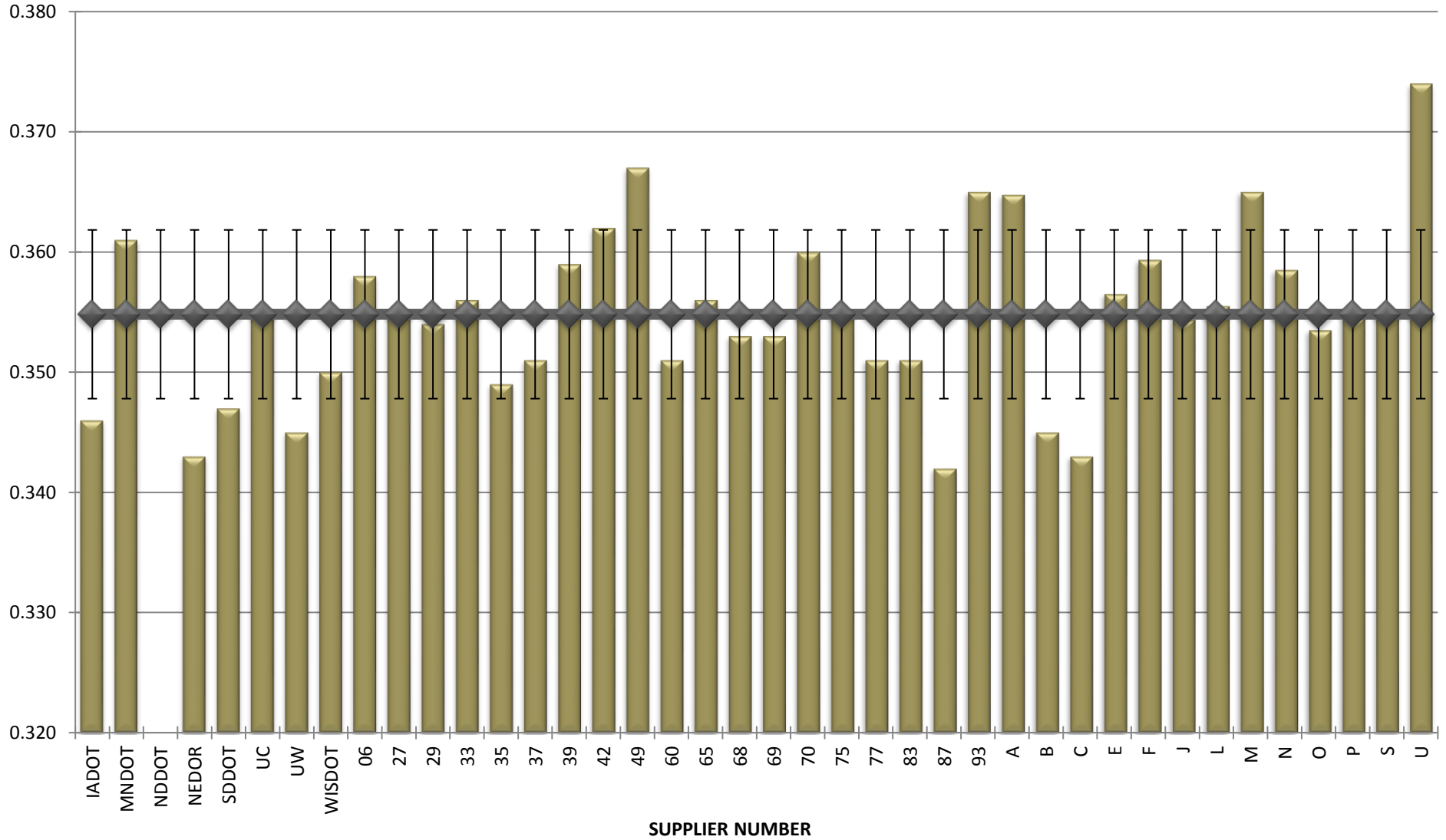
**COMBINED STATE BINDER GROUP ROUND ROBIN
SUMMARY B 2017-2
PG 64-22**

BBR STIFFNESS



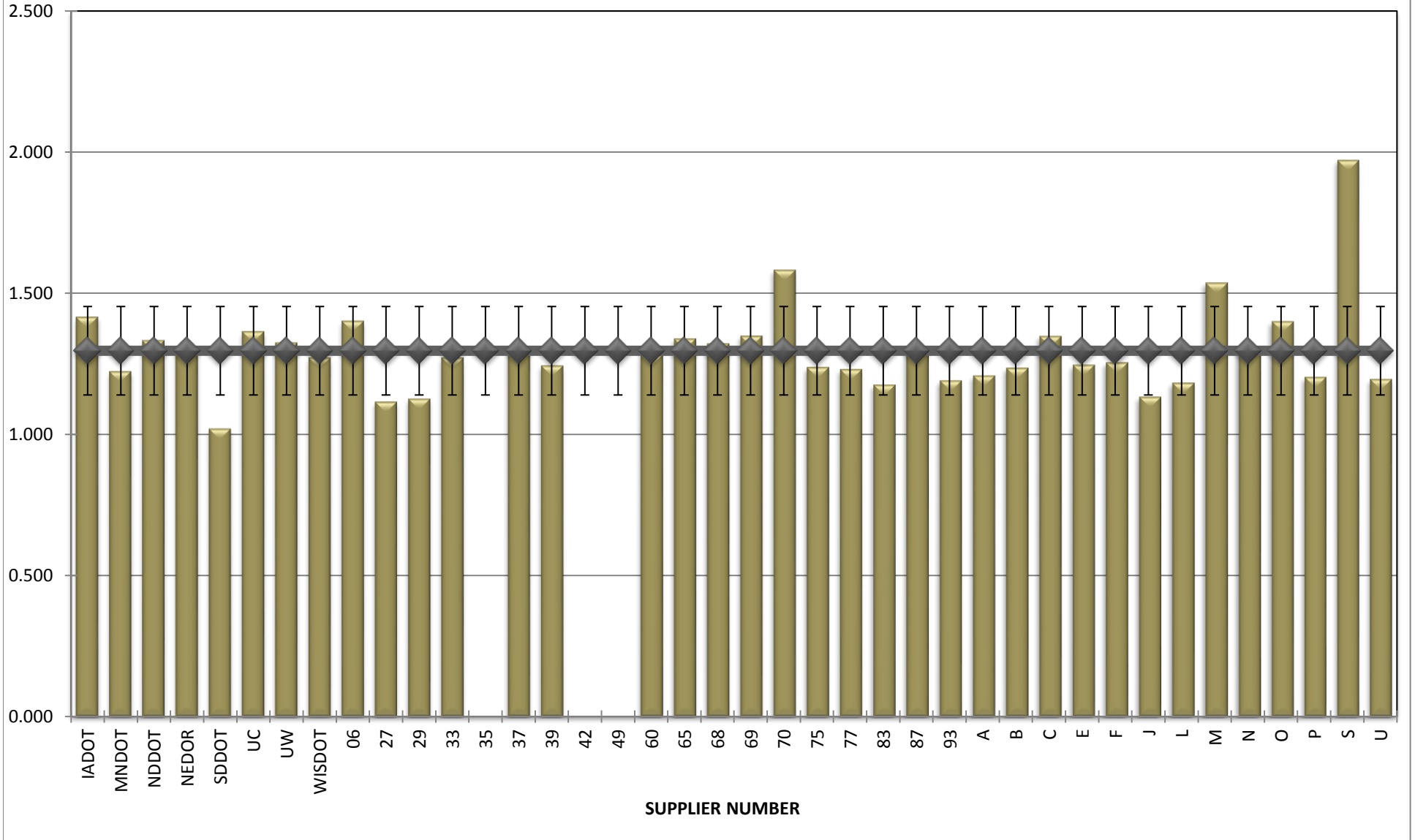
**COMBINED STATE BINDER GROUP ROUND ROBIN
SUMMARY B 2017-2
PG 64-22**

BBR m-VALUE



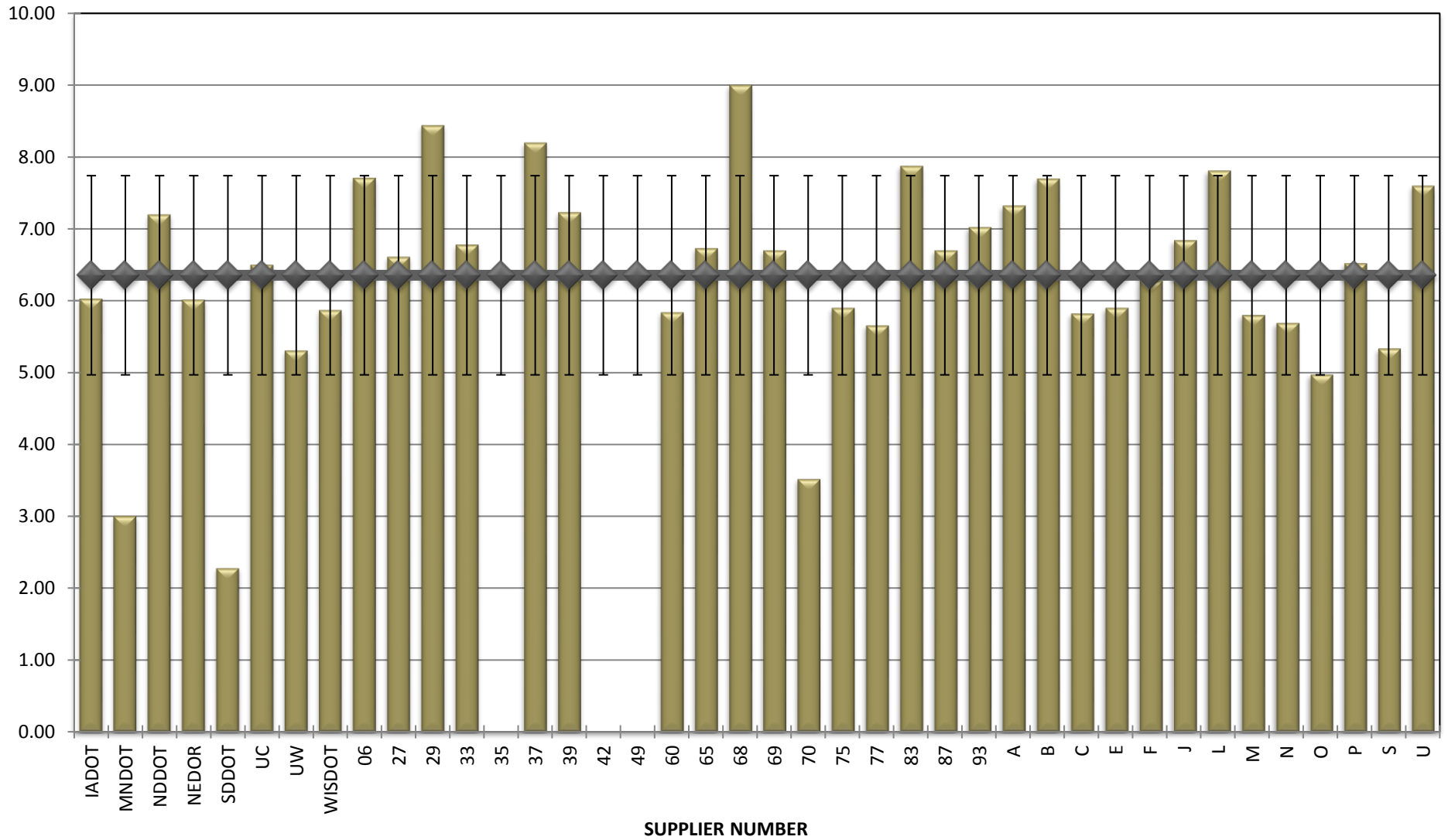
**COMBINED STATE BINDER GROUP ROUND ROBIN
SUMMARY B 2017-2
PG 64-22**

Jnr @ 100 Pa



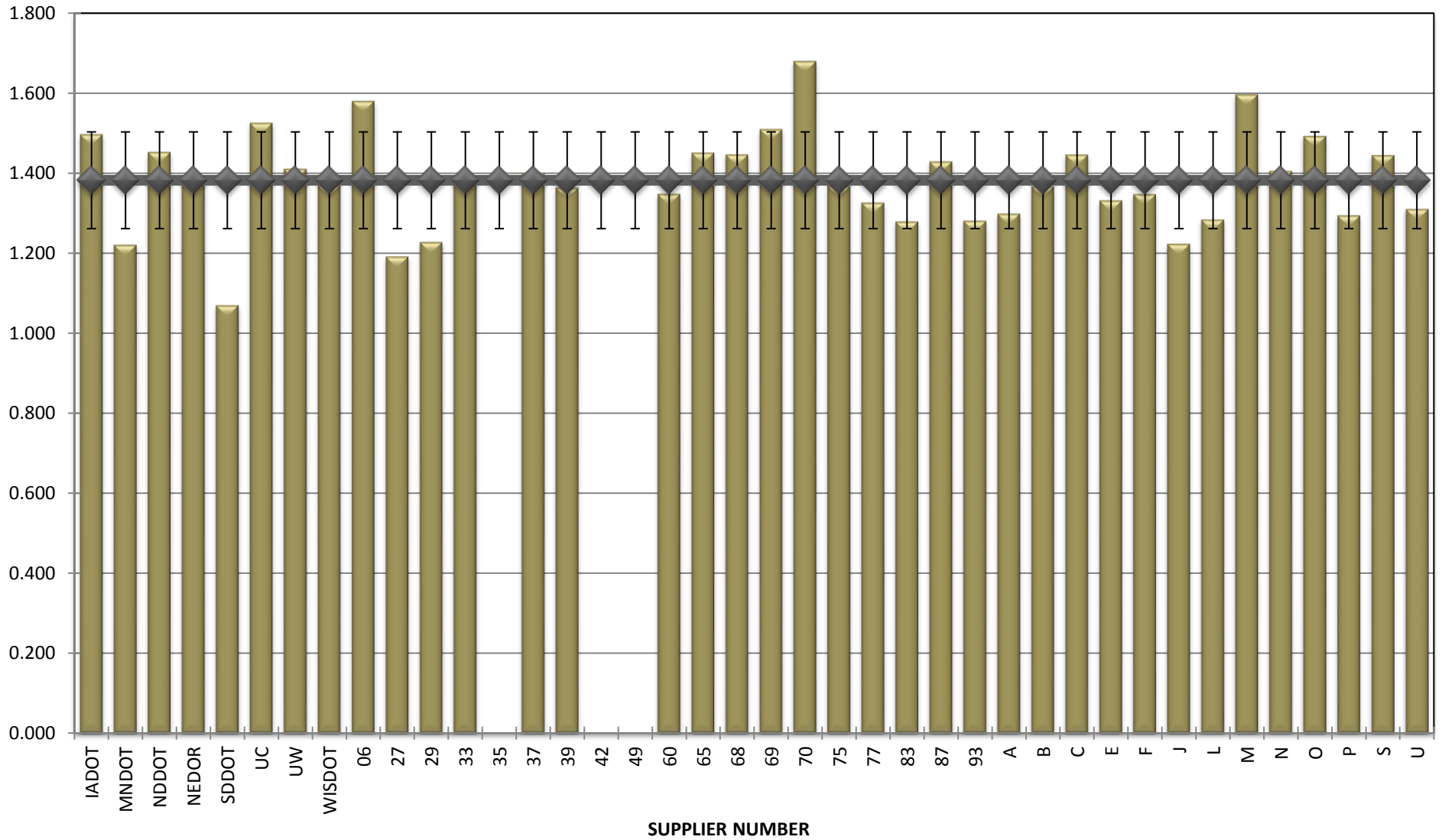
**COMBINED STATE BINDER GROUP ROUND ROBIN
SUMMARY B 2017-2
PG 64-22**

% Recovery @ 100 Pa



**COMBINED STATE BINDER GROUP ROUND ROBIN
SUMMARY B 2017-2
PG 64-22**

Jnr @ 3200 Pa



**COMBINED STATE BINDER GROUP ROUND ROBIN
SUMMARY B 2017-2
PG 64-22**

% Recovery @ 3200 Pa

